



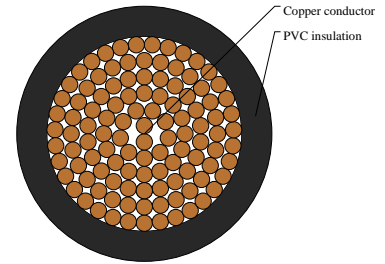
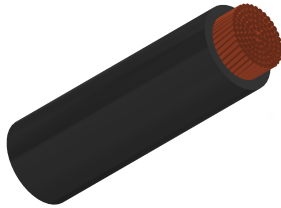
Caledonian

Automotive Cables

www.caledonian-cables.com

marketing@caledonian-cables.com

HDEB 1C40



APPLICATIONS

This PVC insulated single-core cable is used in low voltage circuits of battery for automobiles

STANDARDS

JIS C 3406

CABLE CONSTRUCTION

Conductor: Cu-ETP1 according to JIS C 3102

Insulation: PVC

Standard Compliance: JIS C 3406

Features:

EB wires is for grounding (-side) and thin type; It consists of complex stranded conductors (flexible type).

HDEB wires are thicker type than EB wires to provide increased mechanical strength.

PHYSICAL AND THERMAL PROPERTIES

Operating temperature: -40 °C to +100 °C

DIMENSION AND PARAMETERS

No. of Cores × Cross-sectional Area	No. and Dia. of Wires	Diameter of Conductor (max.)	Nominal Insulation Thickness	Overall Diameter (min.)	Overall Diameter (max.)	Approx. Weight	Electrical Resistance at 20°C (max.)
No.×mm ²	no./mm	mm	mm	mm	mm	kg/km	MΩ/m
1x40	494/0.32	9.1	1.4	11.9	12.6	442	0.46